

SHOPPING LIST

Material for four benches*

1x4 x 8-ft. cedar (6)

2x4 x 8-ft. cedar (11)

5/4 x 6-in. x 10-ft. cedar
decking (6)

3/8 x 4-in. carriage bolts with
washers and nuts (16)

1-5/8-in. deck screws (stain-
less steel or exterior-grade)

3-in. deck screws (stainless
steel or exterior-grade)

Polyurethane glue

UV-resistant wood protectant
(optional)

***All lumber dimensions are nominal.**

MATERIALS AND CUTTING LIST

KEY	NO.	DESCRIPTION*	SIZE
A4Seat supports.....	1-1/2 x 3-1/2 x 55 in.
B4Seat supports.....	1-1/2 x 3-1/2 x 48 in.
C4Seat supports.....	1-1/2 x 3-1/2 x 40 in.
D4End supports.....	1-1/2 x 3-1/2 x 15-1/8 in.
E8Cross supports.....	1-1/2 x 3-1/2 x 12-1/8 in.
F4Cross supports.....	1-1/2 x 3-1/2 x 8 in.
G4Cleats	1-1/2 x 3-1/2 x 12 in.
H12Seat boards.....	1 x 5-3/8 x 60 in.
I32Outer legs.....	3/4 x 3-1/2 x 14 in.
J16Inner fixed legs.....	1-1/2 x 3-1/2 x 8 in.
K16Inner adjustable legs.....	1-1/2 x 3-1/2 x 8 in.

***All lumber is cedar.**

TREE BENCH

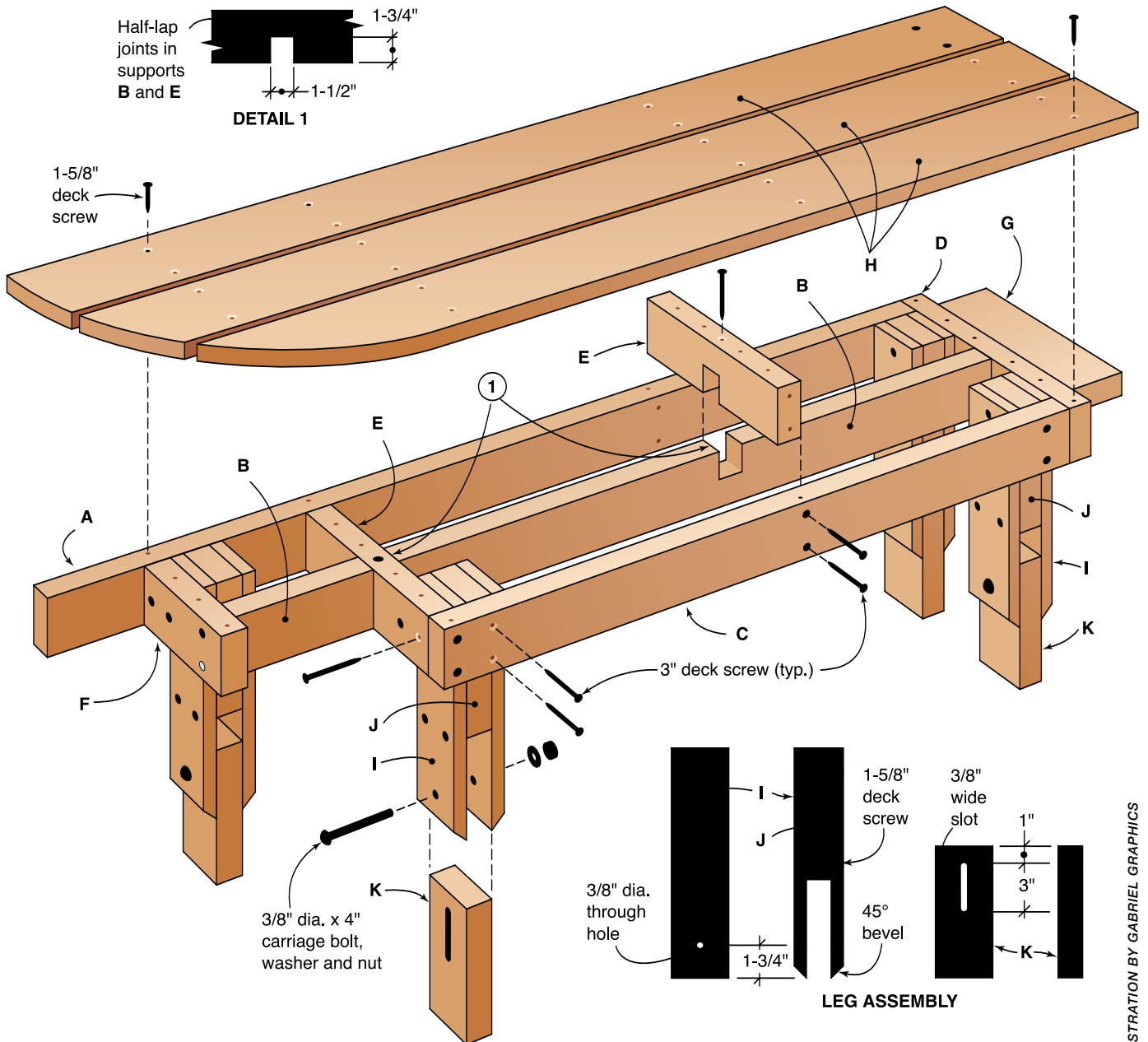
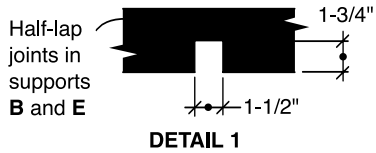
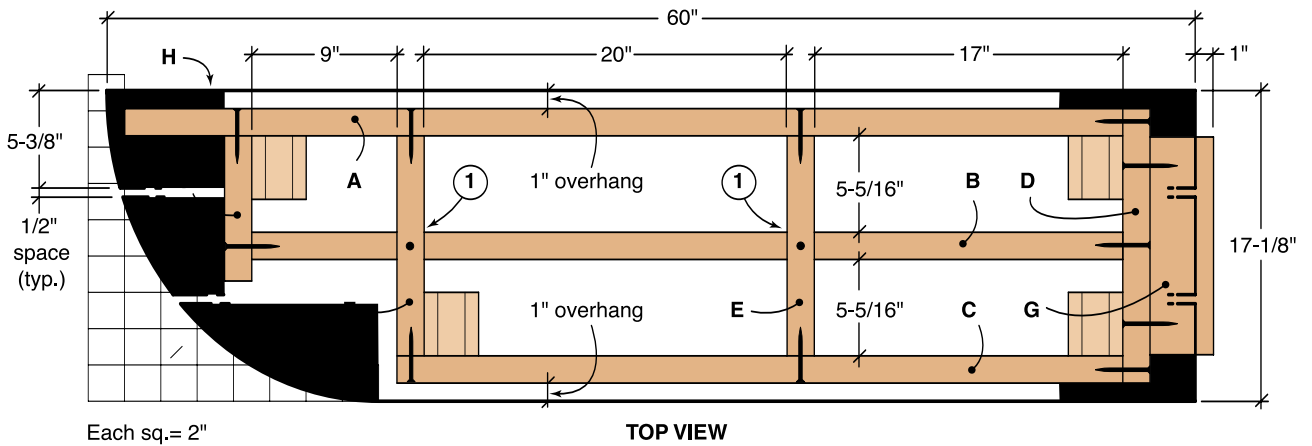


ILLUSTRATION BY GABRIEL GRAPHICS